

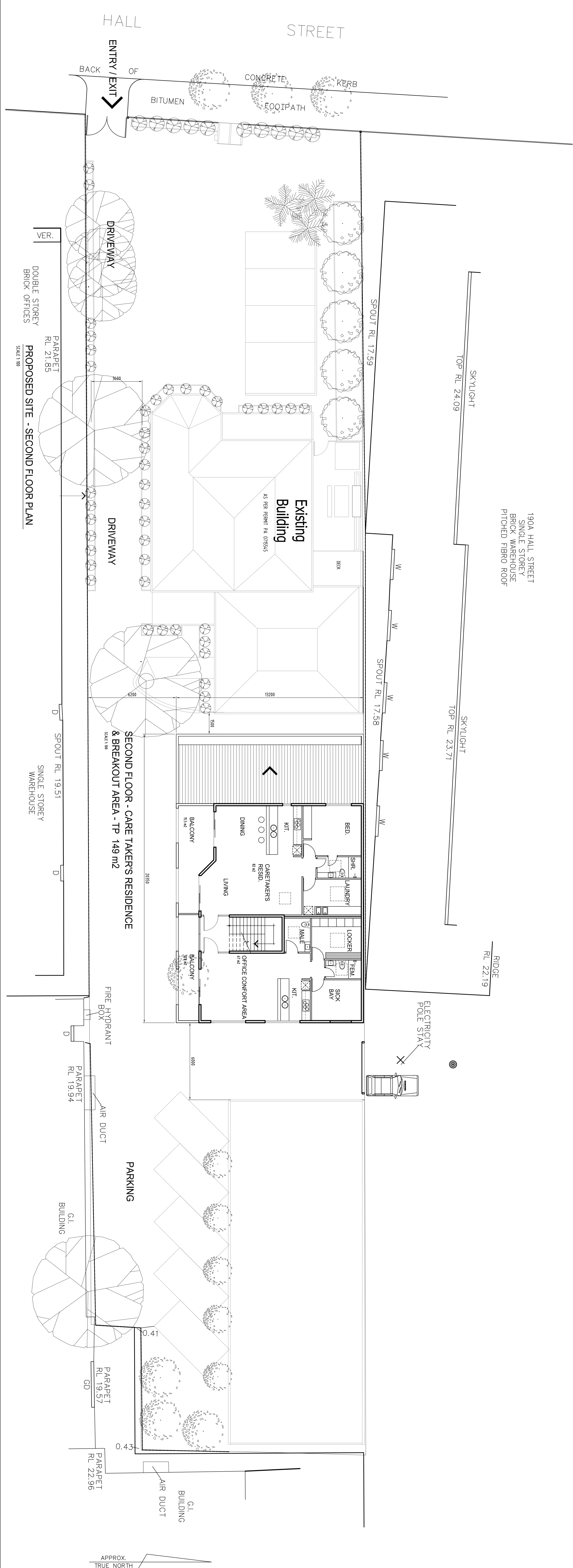
PROPOSED SITE - FIRST FLOOR PLAN
SCALE 1:100

SINGLE STOREY WAREHOUSE

PROJECT COMMERCIAL DEVELOPMENT AT 184 HALL ST. SPOTSWOOD VIC 3025

PROF. WAREHOUSE AND OFFICE BUILDING - FIRST AND SECOND FLOOR PLANS

DATE: 18/04/09
DRAWN BY: S. SWAIN
CHECKED BY: S. SWAIN
SCALE: 1:100



PROPOSED SITE - SECOND FLOOR PLAN
SCALE 1:100

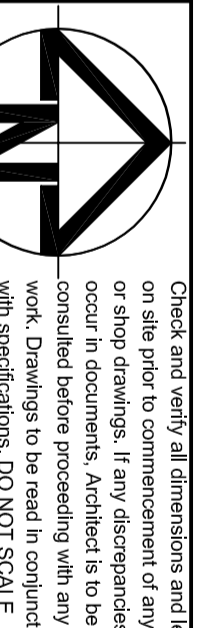
SINGLE STOREY WAREHOUSE

PROJECT COMMERCIAL DEVELOPMENT AT 184 HALL ST. SPOTSWOOD VIC 3025

PROF. WAREHOUSE AND OFFICE BUILDING - FIRST AND SECOND FLOOR PLANS

DATE: 18/04/09
DRAWN BY: S. SWAIN
CHECKED BY: S. SWAIN
SCALE: 1:100

MAP DEVELOPMENTS
BUILDERS AND DESIGNERS
Maximise The Value of Your Prime Asset!
Tel: 03 9555 0317 mobile: 0417176716. 03 9555 0317
1/12 Zilber st - Ripport - Melb. - Vic - 3190



PROJECT COMMERCIAL DEVELOPMENT AT 184 HALL ST. SPOTSWOOD VIC 3025

PROF. WAREHOUSE AND OFFICE BUILDING - FIRST AND SECOND FLOOR PLANS

DATE: 18/04/09
DRAWN BY: S. SWAIN
CHECKED BY: S. SWAIN
SCALE: 1:100

TP 4

